

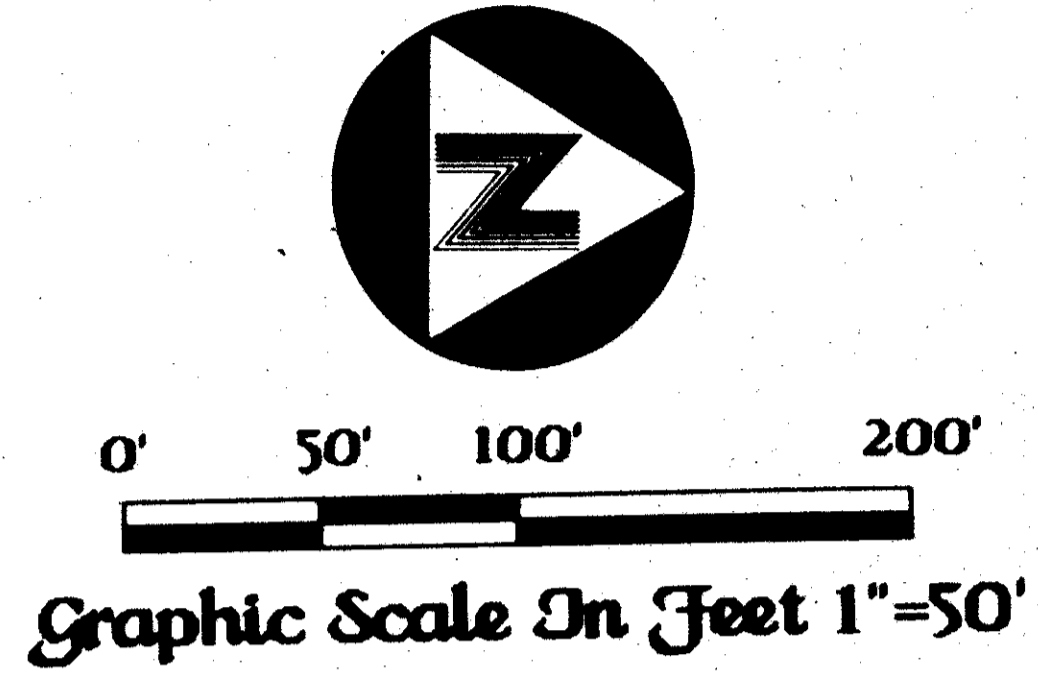
-Indian Spring Plat No. 5-

65

February, A.D., Nineteen Hundred Eighty Eight

Sheet 3 of 3

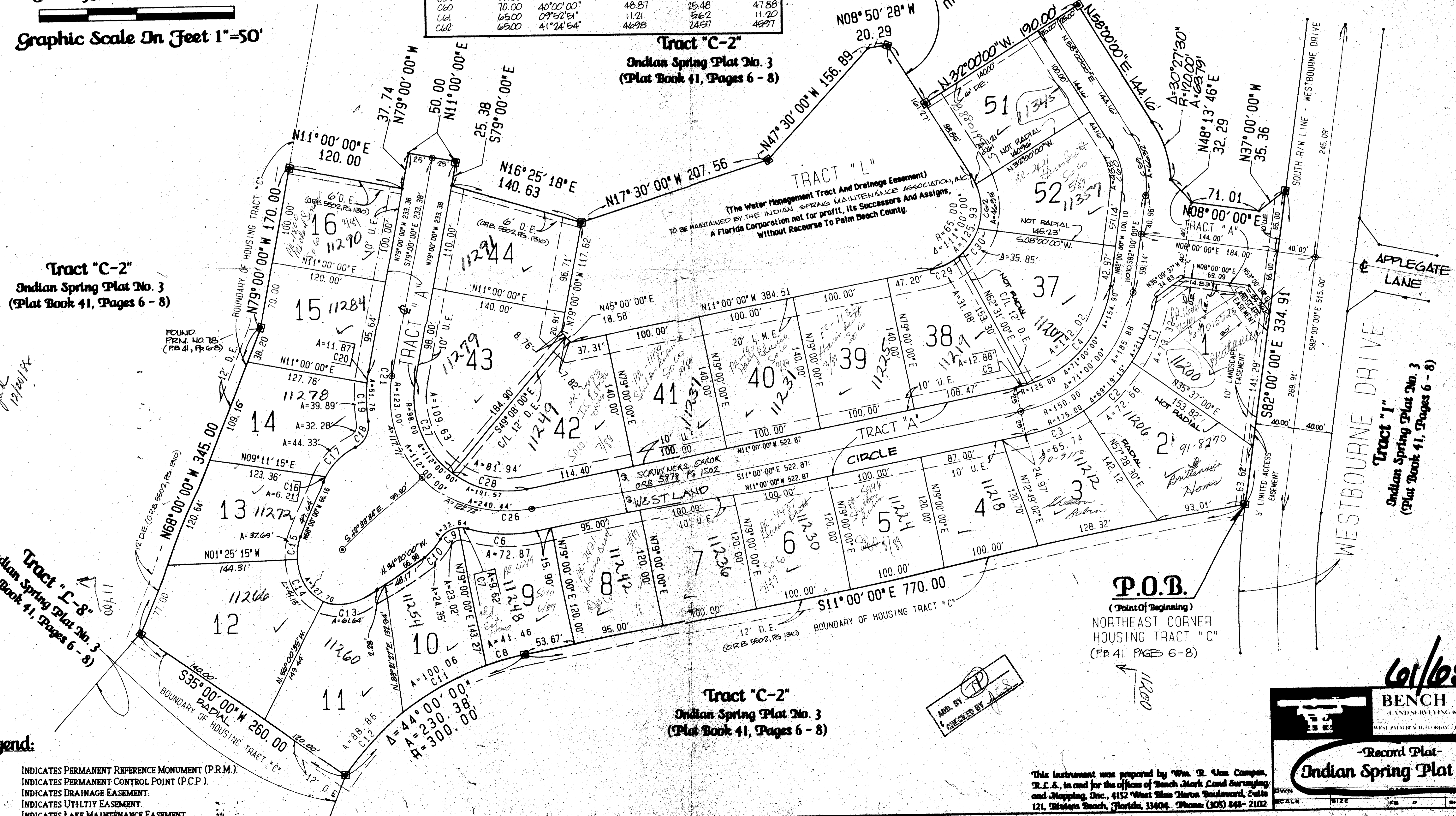
State of Florida)
County of Palm Beach)
This Plat was filed for record at this day of _____, A.D. 1988, and duly recorded in Plat Book _____ on Pages _____
John B. Dunkle,
Clerk of the Circuit Court.
By _____ Deputy Clerk.



Curve ID	Radius	Delta	Length	Tangent	Chord
C1	175.00	24°00'24"	73.32	37.21	72.79
C2	175.00	23°47'21"	72.66	36.86	72.14
C3	175.00	21°31'30"	65.74	33.26	65.36
C4	125.00	65°05'48"	142.02	79.78	134.50
C5	125.00	5°54'12"	12.88	6.45	12.87
C6	148.00	28°12'44"	72.87	37.19	72.14
C7	25.00	22°02'54"	9.62	4.87	9.56
C8	300.00	7°55'06"	41.46	20.76	41.43
C9	25.00	52°45'01"	23.02	12.40	22.21
C10	60.00	23°15'12"	24.35	12.35	24.18
C11	300.00	19°06'35"	100.06	50.50	99.60
C12	300.00	16°58'18"	88.86	44.76	88.54
C13	55.00	64°12'58"	61.64	34.51	58.41
C14	55.00	42°51'19"	41.14	21.58	40.19
C15	55.00	39°15'43"	37.69	19.68	36.96
C69	95.00	40°00'00"	66.32	34.58	64.98
C60	70.00	40°00'00"	48.87	25.48	47.88
C61	65.00	09°52'51"	11.21	5.62	11.20
C62	65.00	41°24'54"	46.98	24.57	46.97

Curve ID	Radius	Delta	Length	Tangent	Chord
C16	67.50	5°16'02"	6.21	3.10	6.20
C17	67.50	37°37'46"	44.33	23.00	43.54
C18	25.00	73°56'01"	32.26	18.82	30.07
C19	148.00	15°26'32"	39.89	20.07	39.77
C20	148.00	4°35'41"	11.87	5.94	11.87
C21	123.00	54°49'57"	117.71	63.80	113.27
C26	123.00	57°10'03"	122.72	67.02	117.70
C27	98.00	64°05'38"	109.63	61.35	104.00
C28	98.00	47°54'22"	81.94	43.54	79.57
C29	65.00	28°06'15"	31.88	16.27	31.56
C30	65.00	31°36'01"	35.85	18.39	35.40

Curve
Data
Tables



DIVISION - Indian Spring #5
 AREA 61 65 208A
 1000 SQ. FT. 35
 RS 73-52
 33457
 Indian Spring
 3445742
 TAZ 453
 J.B. 12/20/88

Legend:

- ⊙ INDICATES PERMANENT REFERENCE MONUMENT (P.R.M.)
- ⊙ INDICATES PERMANENT CONTROL POINT (P.C.P.)
- D.E. INDICATES DRAINAGE EASEMENT
- U.E. INDICATES UTILITY EASEMENT
- L.M.E. INDICATES LAKE MAINTENANCE EASEMENT

This instrument was prepared by Wm. B. Von Campen, P.L.S., and for the office of Bench Mark Land Surveying and Mapping, Inc., 4152 West Main Street, Suite 121, Deltona, Florida, 32724. Phone (407) 242-2102

60/65

BENCH MARK
LAND SURVEYING & MAPPING, INC.
WEST PALM BEACH, FLORIDA • DELTONA, FLORIDA

-Record Plat-
Indian Spring Plat No. 5

SCALE	SHEET 3 OF 3
-------	--------------